



*"We Care for Our Residents by Working Together to Build a Better Community for Today and Tomorrow."*  
City of Rohnert Park, 130 Avram Avenue, Rohnert Park, California 94928 (707) 588-2227 [www.rpcity.org](http://www.rpcity.org)

CITY OF ROHNERT PARK  
**BICYCLE AND PEDESTRIAN ADVISORY COMMITTEE**  
REGULAR MEETING AGENDA

Monday, February 27, 2022, 5:30 p.m.

LOCATION: Rohnert Park City Council Chambers, Rohnert Park City Hall,  
130 Avram Avenue, Rohnert Park, California

**\*COVID-19 NOTICE\***

The City of Rohnert Park Bicycle and Pedestrian Advisory Committee (BPAC) welcomes your attendance, interest and participation at its regular meetings, scheduled on the fourth Monday of each month at 5:30 p.m., and its special meetings, which are scheduled as needed. **The use of a mask or facial covering when attending the BPAC meeting is strongly recommended, regardless of vaccination status.**

**Public Comments during the Meeting:** Members of the Public can provide public comment at the meeting. Comments are limited to three minutes per appearance with a maximum allowance of 30 minutes allotted per comment period. Members of the public may also provide advanced public comment by sending comments to the Management Analyst by email at [acotter@rpcity.org](mailto:acotter@rpcity.org). Comments are requested by 3:00 p.m. on the day of the meeting.

**American Disability Act Accommodations:** Any member of the public who needs accommodations should email the ADA Coordinator at [jcannon@rpcity.org](mailto:jcannon@rpcity.org) or by calling 707- 588- 2221. The ADA Coordinator will use their best efforts to provide reasonable accommodations to provide as much accessibility as possible while also maintaining public safety in accordance with the City procedure for resolving reasonable accommodation requests. Reasonable accommodations information is on the City website at: [https://www.rpcity.org/city\\_hall/departments/human\\_resources/a\\_d\\_a\\_and\\_accessibility\\_resources](https://www.rpcity.org/city_hall/departments/human_resources/a_d_a_and_accessibility_resources)

Bicycle and Pedestrian Advisory Committee agendas and minutes may be viewed on the City's website: [www.rpcity.org](http://www.rpcity.org).

**MEETING ITEMS**

1. Call To Order/Roll-Call  
Tim Hensel (Chair) \_\_ Gary Gutierrez \_\_ Shirley Johnson \_\_ Steve Keith \_\_ Jan Ogren \_\_
2. Introductions
3. Oath of Office
4. Public Comments (on items not on the Agenda)
5. Election of Officers (Action)
6. Proposed Hinebaugh Creek Path (K Section to Snyder Lane) Rehabilitation and Snyder Lane Crossing (Discussion)
7. New Matters for Future Consideration (Discussion)
8. Adjournment (Action)

---

**CERTIFICATION OF POSTING OF AGENDA:**

I, Ashley Cotter, Management Analyst for the City of Rohnert Park, declare that the foregoing agenda for the February 27, 2023, Regular Meeting of the Rohnert Park Bicycle and Pedestrian Advisory Committee was posted and available for review on Thursday, February 23, 2023, at Rohnert Park City Hall, Community and Senior Centers, Public Safety Main Building. The agenda is also available on the City web site at [www.rpcity.org](http://www.rpcity.org).

Executed this 23rd day of February, 2023, at Rohnert Park, California.  
Ashley Cotter, Management Analyst

# ROHNERT PARK MULTI USE PATH IMPROVEMENTS

Project #2017-22

# BACKGROUND

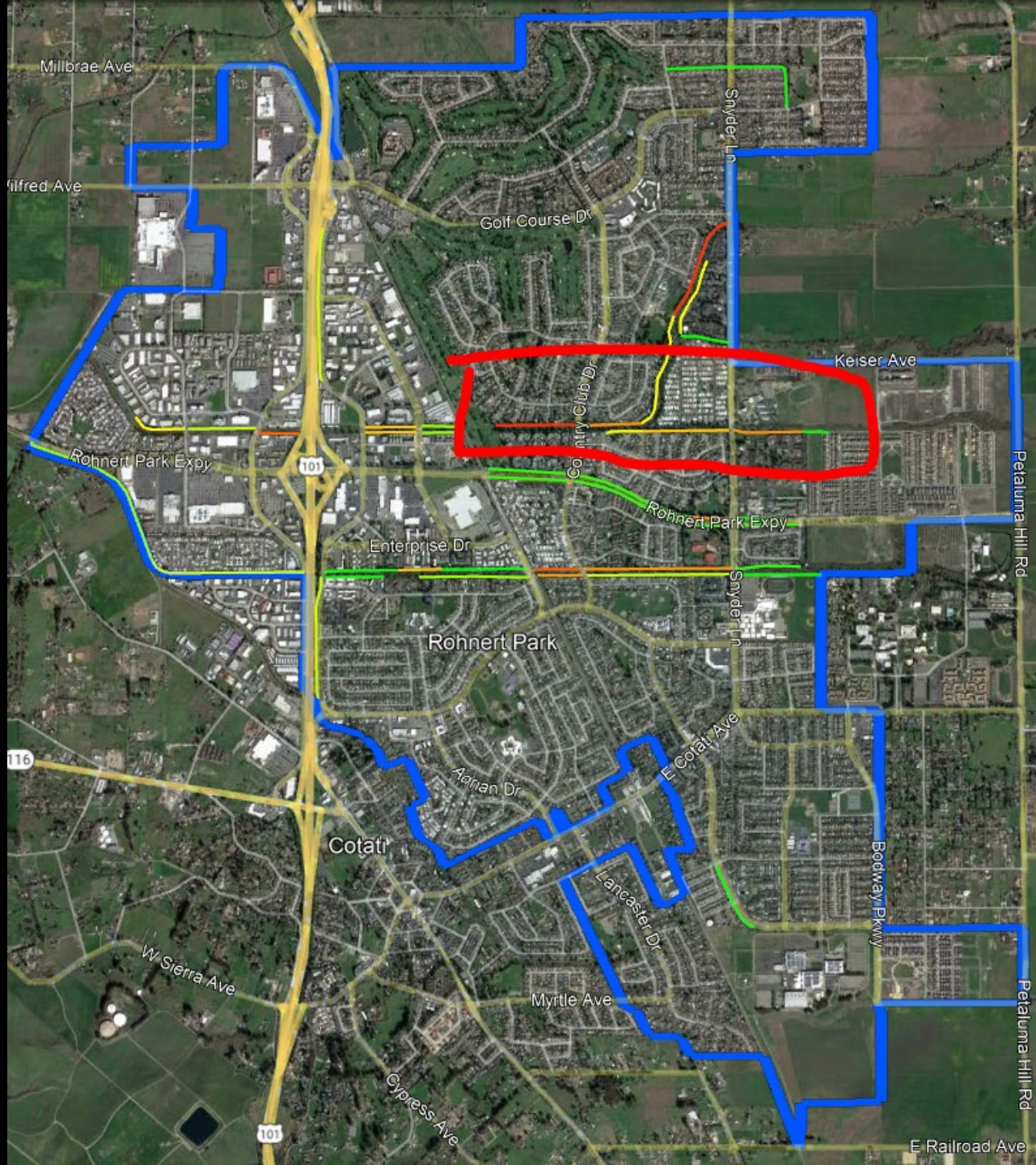
- NOVEMBER 2017, THE CITY HIRED FUGRO ROADWARE, INC. TO PERFORM A BIKE PATH AUDIT THROUGHOUT THE CITY OF ROHNERT PARK.
- APRIL 2018, THE REPORT OUTLINED 43 PATHWAY SECTIONS, 31 OF WHICH WERE IN NEED OF REPAIR/REPLACEMENT.
- OCTOBER 2019, THE COLEMAN CREEK PATHWAY AND CRANE CREEK PATHWAY WERE REPLACED.

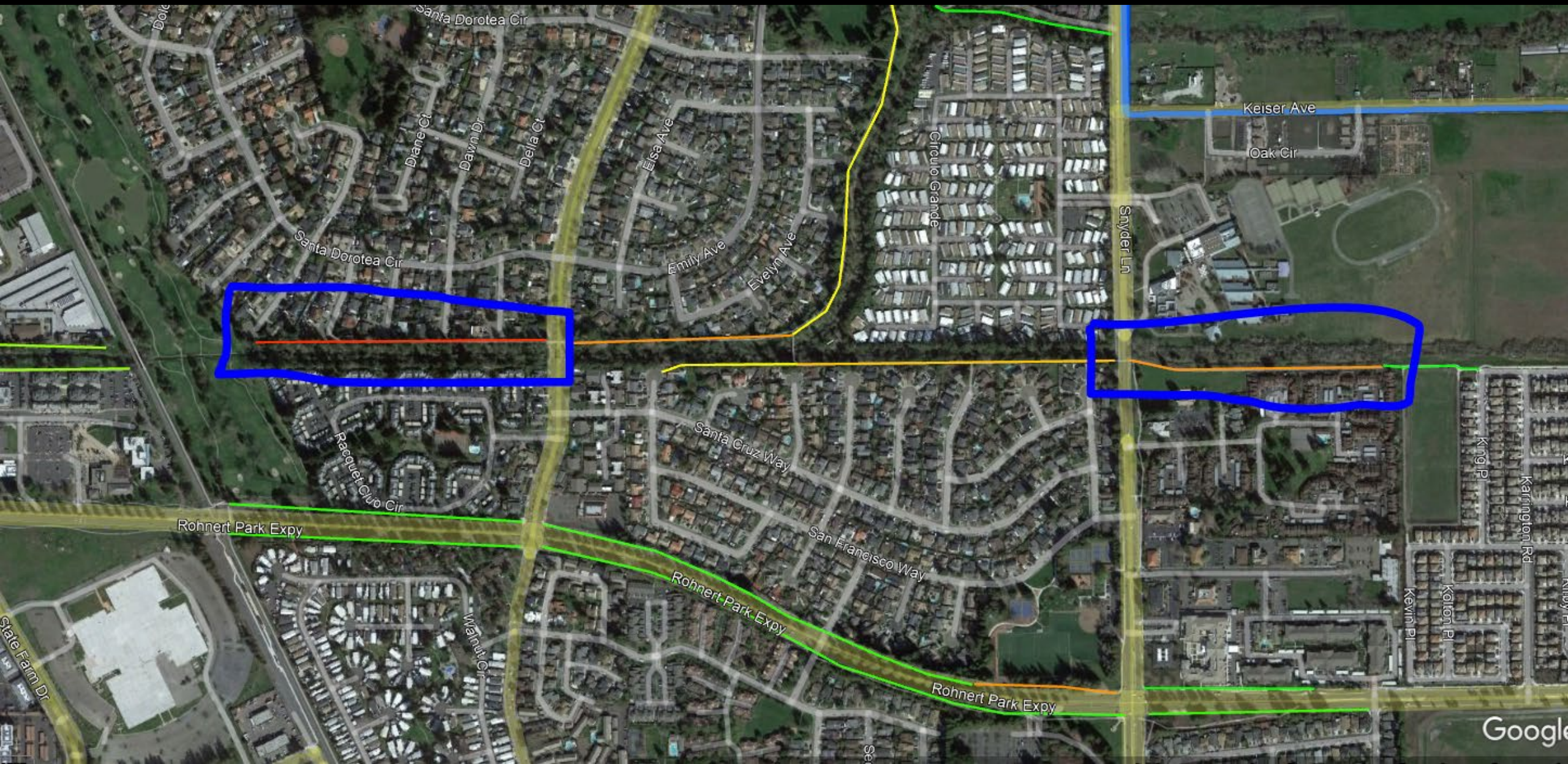
Street ID	Street Name	Beg Location	End Location	Surface Type	PCI
COLE	COLEMAN CREEK - COLEMA	BEND	GOLF COURSE DRIVE	P - PCC	100
COLE	COLEMAN CREEK - COLEMA	HILLVIEW WAY	SNYDER LANE	P - PCC	100
COLE	COLEMAN CREEK - COLEMA	SNYDER LANE	BEND	P - PCC	100
COPE	COPELAND CREEK - COPELA	SEED FARM DRIVE	END OF PCC	P - PCC	100
CRAN	CRANE CREEK - CRANEC	SNYDER LANE	BEND	P - PCC	100
RPX	ROHNERT PARK EXPRESSWAY - ROHNER	NEW DEVELOPMENT	SNYDER LANE	P - PCC	98
HINE	HINEBAUGH CREEK - HINEBA	PCC	END OF BASIN	P - PCC	96
COPE	COPELAND CREEK - COPELA	COMMERCE BOULEVARD	END OF PCC	P - PCC	95
COPE	COPELAND CREEK - COPELA	PCC	COMMERCE BOULEVARD	P - PCC	94
COPE	COPELAND CREEK - COPELA	SNYDER LANE	END	P - PCC	93
RPX	ROHNERT PARK EXPRESSWAY - ROHNER	PCC	COUNTRY CLUB DRIVE	P - PCC	85
RPX	ROHNERT PARK EXPRESSWAY - ROHNER	COUNTRY CLUB DRIVE	RAILROAD	P - PCC	84
RPX	ROHNERT PARK EXPRESSWAY - ROHNER	RAILROAD	COUNTRY CLUB ROAD	P - PCC	83
RPX	ROHNERT PARK EXPRESSWAY - ROHNER	COUNTRY CLUB DRIVE	SNYDER LANE	P - PCC	82
RPX	ROHNERT PARK EXPRESSWAY - ROHNER	SNYDER LANE	JASMINE CIRCLE	P - PCC	82
COPE	COPELAND CREEK - COPELA	START (NEAR SONOMA STATE)	SNYDER LANE	P - PCC	81
COPE	COPELAND CREEK - COPELA	AC	SEED FARM DRIVE	A - AC	65
COPE	COPELAND CREEK - COPELA	WEST CITY LIMIT	BEND	A - AC	61
HINE	HINEBAUGH CREEK - HINEBA	RAILROAD	STATE FARM DRIVE	A - AC	61
HINE	HINEBAUGH CREEK - HINEBA	STATE FARM DRIVE	RAILROAD	A - AC	61
COPE	COPELAND CREEK - COPELA	COUNTRY CLUB DRIVE	SNYDER LANE	A - AC	56
HINE	HINEBAUGH CREEK - HINEBA	REDWOOD DRIVE	LABATH AVENUE	A - AC	56

Street ID	Street Name	Beg Location	End Location	Surface Type	PCI
COMM	COMMERCE - COMMER	5879 COMMERCE BOULEVARD	UTILITY COURT	A - AC	55
COPE	COPELAND CREEK - COPELA	BEND	REDWOOD DRIVE	A - AC	54
COMM	COMMERCE - COMMER	7300 COMMERCE BOULEVARD	N OR AVRAM AVENUE	A - AC	51
HINE	HINEBAUGH CREEK - HINEBA	NEAR SAN BENITO COURT	NEAR SAN MATEO COURT	A - AC	47
FIVE	FIVE CREEK - FIVECR	BEND	END	A - AC	44
FIVE	FIVE CREEK - FIVECR	PARK	HINEBAUGH CREEK	O - AC/AC	41
HINE	HINEBAUGH CREEK - HINEBA	BEND	LABATH AVENUE	A - AC	40
HINE	HINEBAUGH CREEK - HINEBA	STATE FARM DRIVE	COMMERCE BOULEVARD	A - AC	34
COPE	COPELAND CREEK - COPELA	AC	END OF AC	A - AC	33
HINE	HINEBAUGH CREEK - HINEBA	COMMERCE BOULEVARD	STATE FARM DRIVE	A - AC	33
HINE	HINEBAUGH CREEK - HINEBA	NEAR SAN MATEO COURT	SNYDER LANE	A - AC	32
HINE	HINEBAUGH CREEK - HINEBA	BEND	COUNTRY CLUB DRIVE	A - AC	27
COPE	COPELAND CREEK - COPELA	SNYDER LANE	COUNTRY CLUB DRIVE	A - AC	26
COPE	COPELAND CREEK - COPELA	COUNTRY CLUB DRIVE	RAILROAD	A - AC	25
CAMI	CAMINO COLEGIO - CAMINO	MAGNOLIA AVENUE	BEND	A - AC	24
HINE	HINEBAUGH CREEK - HINEBA	SNYDER LANE	END OF AC	A - AC	22
RPX	ROHNERT PARK EXPRESSWAY - ROHNER	SNYDER LANE	END OF AC	A - AC	20
COPE	COPELAND CREEK - COPELA	RAILROAD	COUNTRY CLUB DRIVE	A - AC	19
HINE	HINEBAUGH CREEK - HINEBA	REDWOOD DRIVE	HAMPTON INN	A - AC	16
FIVE	FIVE CREEK - FIVECR	SNYDER LANE	PARK	A - AC	9
HINE	HINEBAUGH CREEK - HINEBA	COUNTRY CLUB DRIVE	RAILROAD	A - AC	7

# PROPOSED FUTURE IMPROVEMENTS

- ULTIMATE GOAL IS TO REPLACE ALL EXISTING ASPHALT CEMENT PATHWAYS WITH NEW PORTLAND CEMENT CONCRETE FOR VARIOUS REASONS:
  - LESS MAINTENANCE
  - EXISTING PATHWAYS MAY BE DIFFICULT FOR SOME USERS
  - THE NEW PATHWAY IS LESS LIKELY TO MOVE WITH SOILS OR TREE ROOTS
- IMMEDIATE GOAL IS TO REPLACE :
  - REPLACE HINEBAUGH CREEK PATHWAY FROM THE GOLF COURSE TO COUNTRY CLUB DRIVE
  - REPLACE HINEBAUGH CREEK PATHWAY FROM SNYDER LANE TO K-SECTION
  - ADD AN ENHANCED CROSSWALK ACROSS SNYDER LANE AT HINEBAUGH CREEK





# METHODOLOGY

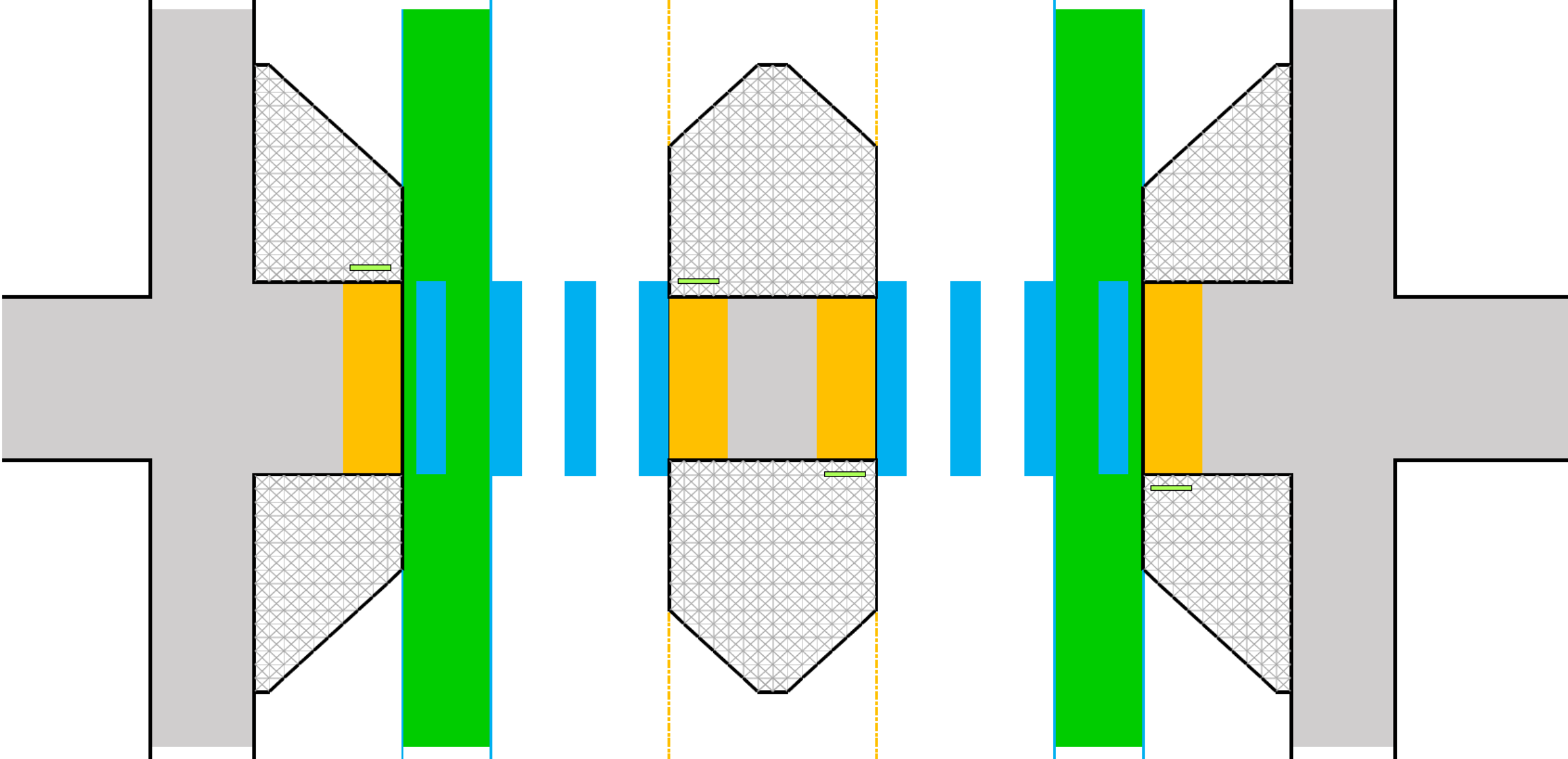
- HINEBAUGH CREEK FROM THE GOLF COURSE TO COUNTRY CLUB DRIVE HAS BEEN PROPOSED DUE TO CURRENT WORST PCI RATING
- HINEBAUGH CREEK FROM SNYDER LANE TO K-SECTION HAS BEEN PROPOSED DUE TO POOR PCI RATING AND PROXIMITY LAWRENCE JONES MIDDLE SCHOOL
- SNYDER LANE CROSSWALK IS BEING PROPOSED DUE TO A NUMBER OF CITIZEN REQUESTS FOR A CROSSWALK AND PROXIMITY TO LAWRENCE JONES MIDDLE SCHOOL.



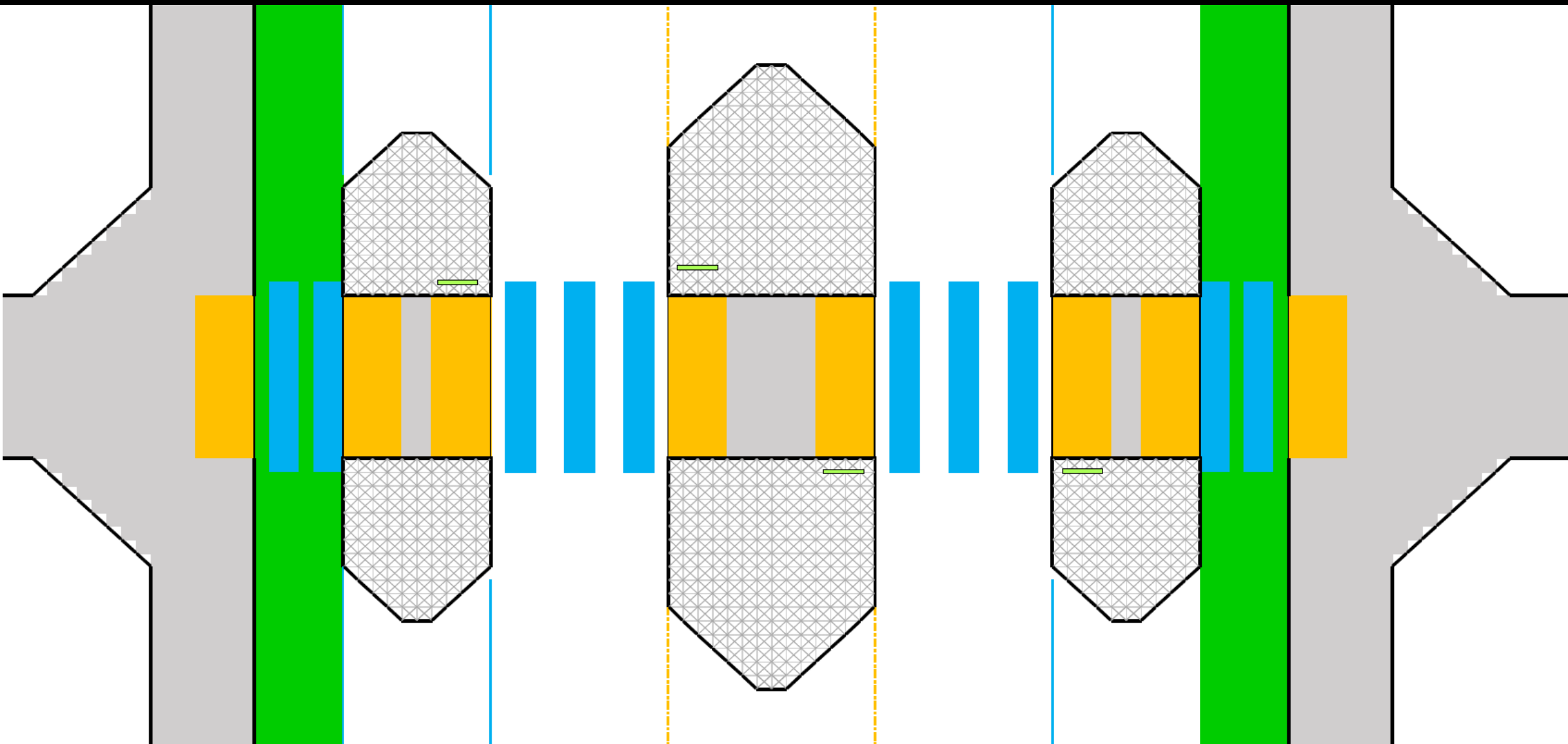
# PROPOSED CROSSWALK FEATURES

- BULB OUTS / CURB EXTENSIONS
- PEDESTRIAN REFUGE
- RRFB'S (RECTANGULAR RAPID FLASHING BEACONS)
- "STOP" SIGNS WHERE PATHWAYS MEET SIDEWALK
- STOP BAR WHERE PATHWAYS MEET SIDEWALK
- ADVANCED "YIELD HERE TO PEDESTRIANS" SIGNS
- "SHARK TEETH" ADVANCED STRIPING
- "NO PARKING" SIGNAGE & STRIPING
- STOP BAR WHERE PATHWAYS MEET SIDEWALK

# PROPOSED CROSSWALK DESIGN



# ALTERNATIVE PROPOSED CROSSWALK DESIGN



QUESTIONS?